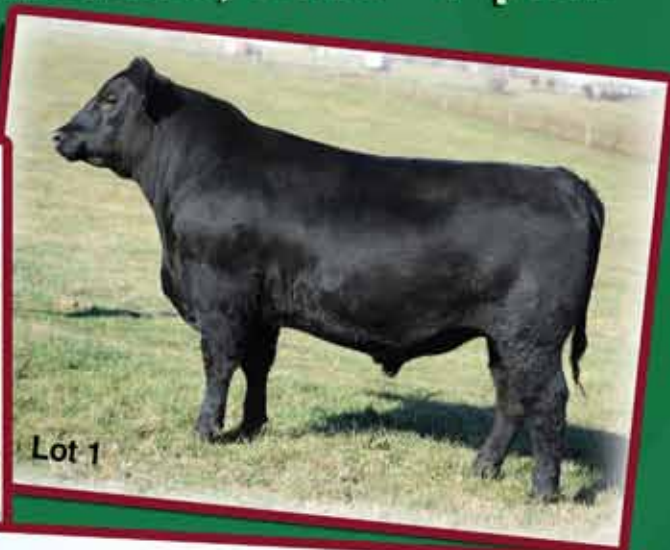




Inaugural Bull Sale

Monday, March 11, 2013

Union Stock Yards • Hillsboro, Ohio • 7 p.m.



Selling 58 Head
of Angus and
Simmental-Angus
Bulls



2594 St. Rt. 73 • Hillsboro, OH 45133

John & Joanie Grimes • 937-764-1198

E-mail: mcfarms@cinci.rr.com

www.maplecrestfarms.com

Dear Cattlemen,

Many of you are familiar with Maplecrest Farms through our annual production sale held on the fourth Saturday of September. Our herd has steadily grown in size in support of our annual female sale. We now believe we have enough numbers and quality to enable us to present our first public auction of herd sire candidates for commercial cattlemen.

Our breeding philosophy is fairly straightforward. We strive to breed cattle that excel in both their genetic and phenotypic makeup. While we work hard to make sure our cattle read well and are pleasing to the eye, we understand that our customers have priorities as well. Commercial cattlemen need bulls that sire cattle that are problem-free and can achieve competitive prices at feeder calf sales. We believe this set of bulls provides an excellent balance of economically-important traits such as calving ease, growth, maternal, and carcass traits.

We are offering 58 serviceable-aged Angus and Simmental-Angus bulls in this sale. They include spring yearlings, fall 18 month olds, and two-year-olds. They all sell complete with EPD's, performance data, breeding soundness examinations, and have been tested negative for persistent BVD. The Maplecrest herd also maintains Certified and Accredited status for Tuberculosis and Brucellosis.

Maplecrest Farms has long been known as breeders of Angus cattle. In recent years, we have started producing Simmental-Angus genetics to offer our customers a greater variety of genetic choices. The Angus bulls selling represent stacked generations of the leading sires and cow families that the breed has to offer. The Simmental-Angus bulls were produced from our past National Champion Simmental-Angus Female, 6040S, and some of our most highly proven Angus donors.

Please give us a call so we may visit with you about how these bulls can help you achieve the production goals for your herd. We look forward to seeing you on the evening of March 11.

Sincerely,

John

MAPLECREST FARMS INAUGURAL BULL SALE • MARCH 11 • UNION STOCK YARDS • 7 P.M.

Sale Day Phones:

(937) 763-6000 - John's Cell (937) 763-1198 - Joanie's Cell
(606) 301-1961 - Ben Wheeler (937) 681-1550 - Scott Winkle
(937) 725-7388 - Bill Butler (937) 393-1958 - Union Stock Yards

Auctioneer:

Ron Kreis

Livestock Publication Representatives:

Chuck Grove, Angus Journal - (816) 390-6600
Dan Wells, Ohio Angus Association - (740) 505-3843

Sale Consultants:

Parker Friedrich - (254) 413-2420
Roger West - (254) 434-1095

Sale Location:

Union Stock Yards
7510 State Route 138 East • Hillsboro, Ohio
Located 5/10 of a mile east on Route 138 at the intersection of US Rt 62 and State Route 138 in Hillsboro

Terms and Conditions:

Cattle will sell under the Terms and Conditions as recommended by the American Angus Association.

Supplemental Information:

A supplemental sheet will be available sale day with complete and up-to-date information including scan and weight data.

Herd Health:

Maplecrest Farms is federally certified and accredited and all sale cattle will be accompanied by appropriate health certificates for immediate shipment.

Trucking:

Truckers believed to be reliable will be available to assist you in shipping your purchases.

EPD and \$Index Values:

EPD and \$Index Values listed in the catalog are as of Jan. 10, 2013.

1 MAPLECREST PREDESTINED J1208

Birth Date: 8-4-2011 Bull +17260300 Tattoo: J1208

B/R New Design 036	V D A R New Trend 315	\$W
G A R Predestined	B/R Blackcap Empress 76	+30.20
G A R Ext 4206	N Bar Emulation EXT	\$F
	G A R 6807 Traveler 1432	+48.72
	Bon View New Design 208	\$G
TC Total 410	TC Erica Eileen 2047	+46.62
Maplecrest Eva 7010	G A R Everest 9409	\$B
Maplecrest Eva 4108	Maplecrest RBC Eva 133	+105.99

CED	BEPD	WEPD	YEPD	MILK	CW	MARB	RE	FAT
+3	+2.3	+55	+105	+28	+50	+1.16	+0.81	+0.20

BW	WW	YW
72	837	1139

This elite herd sire is a logical choice to start off the first Maplecrest bull sale. J1208 is sired by the legendary Predestined out of the popular Maplecrest Eva 7010. J1208 is bred for growth and carcass superiority as documented by his elite \$Beef EPD. Maternal brothers to J1208 have sold for \$13,000 and \$12,000 at previous Gardiner Angus Ranch sales.



2 MAPLECREST COMPLETE J1202

Birth Date: 8-10-2011 Bull +17261996 Tattoo: J1202

C F Right Design 1802	Bon View New Design 1407	\$W
Summitcrest Complete 1P55	Vision HF Blackcap 0015	+29.39
Summitcrest Elba 1M17	Vermilion Dateline 7078	\$F
	Summitcrest Elba 1F43	+51.35
	S S Traveler 6807 T510	\$G
S S Objective T510 OT26	S S Miss Rita R011 7R8	+45.77
G A R Objective 1485	Bon View New Design 1407 AAA	\$B
G A R 1407 New Design 2232	G A R Precision 2610	+87.18

CED	BEPD	WEPD	YEPD	MILK	CW	MARB	RE	FAT
+0	+3.9	+60	+109	+38	+27	+0.78	+0.92	+0.07

BW	WW	YW
74	738	1132

This outstanding prospect has the credentials to make a significant impact on any herd. This powerful bull is a full brother to the \$7,500 top-selling fall heifer in our 2012 sale. His dam was the \$9,600 top-selling cow at our 2011 sale and boasts an impressive set of credentials. She has 24 head recorded that ratio 105 for IMF and 102 for RE. 1485 produced the top-selling and third top-selling bulls at the fall 2010 Gardiner Angus Ranch Bull sale. 1485 is also a full sister to the dam of the noted young sire at Select Sires G A R Prophet.



3 MAPLECREST 454 NEW DAY J1055

Birth Date: 7-14-2011 Bull 17260349 Tattoo: J1055

B/R New Day 8005	A A R New Trend	\$W
Day 454	S V F Forever Lady 57D	+46.93
B/R Ruby 1224	B/R New Design 323	\$F
	H F Ruby 036-951	+52.72
	Bon View New Design 208	\$G
TC Total 410	TC Erica Eileen 2047	+43.39
Maplecrest Rita K9286	G A R Retail Product	\$B
Maplecrest Rita 5065	G A R New Design 1381	+88.49

CED	BEPD	WEPD	YEPD	MILK	CW	MARB	RE	FAT
+4	-2.2	+65	+112	+32	+31	+0.59	+0.84	-0.43

BW	WW	YW
47	823	1122

If you are looking for that unique bull that combines low birth weight with explosive growth, here he is! J1055 boasts the lowest Birth Weight EPD and the highest Yearling Weight EPD in this entire offering. This bull possesses a pedigree full of historically great sires from Select Sires including New Day 454, Total, and Retail Product. This is a bull bred for predictable performance.





LOT 4



LOT 5



LOT 6

4 MAPLECREST TOTAL J2020

Birth Date: 1-11-2012 Bull +17376358 Tattoo: J2020

Bon View New Design 208	B/R New Design 036	\$W
TC Total 410	Bon View Erica 443	+25.07
TC Erica Eileen 2047	Twin Valley Precision E161	SF
	TC Erica Eileen 5116	+50.36
	G A R Precision 1680	\$G
C A Future Direction 5321	C A Miss Power Fix 308	+42.60
Maplecrest Blackcap L7115	Plowman 1627 of Millbrae SAR	\$B
G A R Plowman G270	G A R Precision 2536	+88.51

CED	BE PD	WE PD	YE PD	MILK	CW	MARB	RE	FAT
-2	+4.4	+62	+109	+26	+32	+65	+.88	-.008

BW	WW	YW
88	666	

TC Total 410 has been our senior herd sire for several years and is considered the "Total" package for growth, carcass traits, docility, and maternal strength. J2020 is a prime example of why Total progeny have been so popular for many years. This bull displays great phenotype and possesses powerful growth numbers. Full and maternal sisters to J2020 will play an important role in our program for years to come. Make sure to check this prospect out on sale day.

5 MAPLECREST COMPLETE J2008

Birth Date: 12-29-2011 Bull 17376357 Tattoo: J2008

C F Right Design 1802	Bon View New Design 1407	AAA	\$W
Summitcrest Complete 1P55	Vision HF Blackcap 0015		+31.65
Summitcrest Elba 1M17	Vermilion Dateline 7078		SF
	Summitcrest Elba 1F43		+51.14
	S S Traveler 6807 T510		\$G
S S Objective T510 0T26	S S Miss Rita R011 7R8		+41.89
BluQ Susie 8046	B/R New Frontier 095		\$B
BluQ Susie S768	Whitestone Susie M142		+86.02

CED	BE PD	WE PD	YE PD	MILK	CW	MARB	RE	FAT
+6	+2.1	+63	+110	+35	+30	+59	+.90	-.014

BW	WW	YW
81	712	

Here is a Complete son that combines moderate birth weight with top-end growth and muscle. Produced from an excellent young Objective daughter, J2008 should sire excellent feeder calves for the commercial cow-calf producer.

6 MAPLECREST 454 J1203

Birth Date: 8-7-2011 Bull +17260365 Tattoo: J1203

Boyd New Day 8005	A A R New Trend	\$W
B/R New Day 454	S V F Forever Lady 57D	+33.18
B/R Ruby 1224	B/R New Design 323	SF
	H F Ruby 036-951	+32.89
	B/R New Design 036	\$G
G A R Predestined	G A R Ext 4206	+40.61
Maplecrest Forever Lady A622	Twin Valley Precision E161	\$B
Maplecrest Forever Lady S301	Baldrige Forever Lady 800J	+86.49

CED	BE PD	WE PD	YE PD	MILK	CW	MARB	RE	FAT
+4	+2.3	+47	+89	+32	+33	+85	+.74	+.042

BW	WW	YW
77	794	1111

Here is a high-volume, powerfully-made bull that should suit the most discriminating bull buyer. His dam was a long-time donor for us and has blessed us with many productive full and maternal sisters. A622 was also Grand Champion Female at the 2007 Ohio State Fair Jr. Angus Show.

7

MAPLECREST 454 J1191

Birth Date: 8-18-2011 Bull +17260360 Tattoo: J1191

B/R New Day 454
B/R Ruby 1224

A A R New Trend	\$W
S V F Forever Lady 57D	+30.75
B/R New Design 323	\$F
H F Ruby 036-951	+39.18
Bon View New Design 208	\$G
TC Erica Eileen 2047	+44.50
G A R Retail Product	\$B
Maplecrest Rita A213	+78.02

TC Total 410
Maplecrest Rita 7088
Maplecrest Rita A531

CED	BEPD	WEPD	YEPD	MILK	CW	MARB	RE	FAT
+4	+2.4	+49	+95	+31	+21	+.66	+.88	-.007

BW	WW	YW
77	654	961

The mating of New Day 454 on Total daughters has worked like a charm and J1191 is further evidence of this fact. J1191 will be hard to miss on sale day as he is very attractive, moderate framed, heavy muscled, and owns a balanced set of EPDs. His outstanding dam was the \$12,000 top-selling bred cow in our 2012 sale that was a many-time champion for Lauren.



FEATURED LOTS

8

MAPLECREST REGIS J1107

Birth Date: 9-17-2011 Bull +17282186 Tattoo: J1107

Coleman Regis 904
Coleman Donna 714

Sitz Traveler 8180	\$W
S A V Emulous 8145	+35.65
Connealy Onward	\$F
Coleman Donna 386	+35.15
O C C Kirby 633K	\$G
Gibbet Hill Mignonne E37	+27.84
V D A R Lucys Boy	\$B
G A R Sleep Easy 1304	+74.62

B C Marathon 7022
Maplecrest Rita K8271
G A R Lucys Boy G158

CED	BEPD	WEPD	YEPD	MILK	CW	MARB	RE	FAT
+7	+3	+55	+94	+29	+34	+.32	+.75	+.008

BW	WW	YW
87	725	1064

This son of the popular Regis is out of the 2009 Ohio State Fair Grand Champion Female K8271. J1107 combines low birth and excellent growth numbers, all in a very attractive package. You will also appreciate his full brothers later in the sale.



9

MAPLECREST BEXTOR J1099

Birth Date: 9-11-2011 Bull 17281787 Tattoo: J1099

C R A Bextor 872 5205 608
Cra Lady Jaye 608 498 S Easy

N Bar Emulation EXT	\$W
B A R Queen Traveler 3015	+23.88
G A R Sleep Easy 1009	\$F
H H F 917 Lady 975 498	+53.93
Bon View New Design 208	\$G
TC Erica Eileen 2047	+43.57
Plowman 1627 of Millbrae SAR	\$B
G A R Precision 2536	+82.86

TC Total 410
Maplecrest Blackcap 6P567
G A R Plowman G270

CED	BEPD	WEPD	YEPD	MILK	CW	MARB	RE	FAT
+0	+3.7	+60	+111	+30	+25	+.71	+.72	-.007

BW	WW	YW
91	689	1059

This son of Bextor has excellent growth numbers with the potential to sire daughters of the highest quality. His dam is an outstanding Total daughter that is a granddaughter of one of the greatest cows in the history of the Angus breed, G A R Precision 2536. His dam is a full sister to the \$10,500 top-selling fall pair in our 2012 sale.





LOT 10

10 MAPLECREST DCATCHER 115Y

Birth Date: 9-13-2011 Bull 2678268 Tattoo: 115Y

CNS Dream On L186
WAGR Dream Catcher 03R
 3C Melody M668 BZ

Nichols Legacy G151
 CNS Sheeza Dream K107W
 HART Subzero G322
 3C Crocus G374 BZ

Bon View New Design 1407
Maplecrest Rita A213
 G A R EXT 327

B/R New Design 036
 Bon View Pride 664
 N Bar Emulation EXT
 G A R 6807 Traveler 93

API
149.0
TI
76.0

CED	BEPD	WEPD	YEPD	MILK	CW	MARB	RE	FAT
13.7	-0.2	55.1	88.5	25.1	14.1	0.69	0.65	0.22

When we began to create Simmental-Angus genetics a few years back, we felt we needed to utilize some of our highest quality and proven Angus donors. 115Y is a product of that philosophy. This Dreamcatcher son is out of the most productive donor in the history of our program, A213. A213 has produced over 100 calves in her lifetime and this bull is truly one of the good ones. We strongly considered retaining this Sim-Angus bull for natural service in our herd but felt that we needed to offer our best in this inaugural Maplecrest bull sale.

BW	WW	YW
87	600	968



SIRE OF LOT 11

11 MAPLECREST NDEW TIME 163Y

Birth Date: 9-1-2011 Bull 2678262 Tattoo: 163Y

CNS Dream On L186
HTP SVF In Dew Time
 HTP SVF Honeydew

Nichols Legacy G151
 CNS Sheeza Dream K107W
 GW Lucky Dice 187H
 HC Honeysuckle Rose

V D A R Lucys Boy
Baldridge Forever Lady 800J
 S V F Forever Lady 177C

Traveler 1148 G D A R
 V D A R Pine Drive Lucy 5
 V D A R New Trend 315
 G D A R Forever Lady 719

API
134.0
TI
64.0

CED	BEPD	WEPD	YEPD	MILK	CW	MARB	RE	FAT
14.2	0.3	50.8	77.8	17.4	8.3	0.43	0.40	0.02

This excellent half-blood son of In Dew Time is a son of the foundation cow of the Forever Lady family in our herd. A full sister to this bull is at the very top end of our Simmental-Angus replacement heifers. 163Y should sire excellent replacement females.

BW	WW	YW
76	629	1007



LOT 12

12 MAPLECREST GMASTER 135Y

Birth Date: 8-29-2011 Bull 2678264 Tattoo: 135Y

PVF-BF BF26 Black Joker
SS Ebonys Grandmaster
 SOSF Ebonys Joy L-123

HARTS Black Casino B408
 PVF-BF Mabelle C131
 HC Power Drive 88H
 NJC/TJF Joy

Meyer Ranch 734
CRCC Dixie Erica 6040S
 O C C Dixie Erica 722J

MR Black GX 6W
 MISS GX 728R
 D H D Traveler 6807
 O C C Dixie Erica 743A

API
88.0
TI
56.0

CED	BEPD	WEPD	YEPD	MILK	CW	MARB	RE	FAT
3.0	1.5	47.1	71.6	28.1	6.5	0.24	0.90	-0.02

The dam of this excellent 3/4 Simmental - 1/4 Angus prospect was the first Sim-Angus female added to our program. 6040S had the distinction of being named the 2007 National Champion Sim-Angus Female at the North American. This moderate-framed, well-balanced bull provides the opportunity for added heterosis on British breed-based commercial females.

BW	WW	YW
83	569	884

13

MAPLECREST PREDESTINED J1145

Birth Date: 3-7-2011 Bull +17149897 Tattoo: J1145

G A R Predestined
G A R Ext 4206

Twin Valley Precision E161
Maplecrest Forever Lady S301
Baldrige Forever Lady 800J

V D A R New Trend 315
B/R Blackcap Empress 76
N Bar Emulation EXT
G A R 6807 Traveler 1432

G A R Precision 1680
W C C Blackcap C9
V D A R Lucys Boy
S V F Forever Lady 177C

\$W
+24.07
\$F
+29.09
\$G
+38.98
\$B
+92.57

CED	BEPD	WEPD	YEPD	MILK	CW	MARB	RE	FAT
+3	+3.9	+45	+85	+26	+42	+1.00	+51	+0.39

BW	WW	YW
78	604	1212

This excellent two-year-old son of Predestined is a full brother to several females who have served as donors for us. J1145 is well-balanced with lots of volume and capacity. He definitely has that herd bull "look."



Lot 13

14

MAPLECREST TOTAL J1188

Birth Date: 3-12-11 Bull +17149899 Tattoo: J1188

TC Total 410
TC Erica Eileen 2047

Bon View New Design 208
TC Erica Eileen 2047

B/R New Design 036
Bon View Erica 443
Twin Valley Precision E161
TC Erica Eileen 5116

Traveler 1148 G D A R
V D A R Pine Drive Lucy 5
V D A R New Trend 315
G D A R Forever Lady 719

\$W
+21.74
\$F
+33.88
\$G
+32.41
\$B
+74.47

CED	BEPD	WEPD	YEPD	MILK	CW	MARB	RE	FAT
+0	+3.5	+50	+91	+21	+29	+6.4	+30	+0.24

BW	WW	YW
79	441	1020

Those of you looking for a bit more frame should check out this Total son. Total is well-known for his ability to sire excellent females. Combine this with the maternal strength of the Forever Lady cow family and you get J1188, an excellent prospect for siring replacement females.



Lot 14

15

MAPLECREST BIG EYE J1173

Birth Date: 2-22-2011 Bull +17151931 Tattoo: J1173

ALC Big Eye D09N
ALC Hazel L12L

C A Future Direction 5321
ALC Hazel L12L

G A R Precision 1680
C A Miss Power Fix 308
S V F Bandolier
Alc Hazel K14H

B/R New Design 036
Bon View Erica 443
Plowman 1627 of Millbrae SAR
G A R Precision 2536

\$W
+28.46
\$F
+33.42
\$G
+42.58
\$B
+71.00

CED	BEPD	WEPD	YEPD	MILK	CW	MARB	RE	FAT
+7	+2.3	+51	+91	+33	+17	+6.3	+80	+0.03

BW	WW	YW
75	597	1079

A big, stout son of the Select Sires bull Big Eye out of one of the best daughters of the popular G270 cow. J1173 is nice combination of moderate birth weight and solid growth.

17 MC GAMBLES REFLECTION J1054

Birth Date: 4-16-2011 Bull 16925746 Tattoo: J1054

Connealy Reflection
Happy Grill of Conanga 6260

Bon View New Design 878
N Bar Emulation EXT
Happy Date of Conanga

Gambles Shadoe 5069
Gambles Shadoe 1106

B/R New Design 036
Bon View Gammer 85
O C C Legend 616L
Gibbet Hill Mignonne E37
Gambles Playmaker 899
Gambles Miss L R Shadoe

\$W
+31.85
\$F
+37.29
\$G
\$B

CED	BEPD	WEPD	YEPD	MILK	CW	MARB	RE	FAT
+10	+3	+53	+95	+28				

BW	WW	YW
71	574	N/A

Here is an excellent calving ease prospect sired by the Accelerated Genetics sire Reflection. J1054 is the first calf produced by Lauren's many-time champion 5069. 5069 was named Grand Champion Angus Female at the 2010 North American Jr. Show and Reserve Grand Champion Female at the All-American Angus Breeder's Futurity Jr. Show. Owned with Gamble Angus, TN and Whitestone Farm, VA.

16

MAPLECREST SYMMETRY J1050

Birth Date: 4-11-2011 Bull 17149896 Tattoo: J1050

G A R Symmetry
G A R Precision 1343

G A R New Design 5050
G A R Precision 1343

B/R New Design 036
G A R Precision 706
G A R Precision 1680
G A R 6148 Emulation 2770

Bon View New Design 208
TC Erica Eileen 2047
S S Objective T510 OT26
G A R 1407 New Design 1942

\$W
+27.63
\$F
+35.08
\$G
+41.10
\$B
+85.28

CED	BEPD	WEPD	YEPD	MILK	CW	MARB	RE	FAT
+5	+2.3	+50	+92	+32	+31	+6.7	+77	+0.04

BW	WW	YW
80	534	1000

A Symmetry son with a balanced set of EPDs out of a Total daughter that traces directly to one of the great cows in the history of Gardiner Angus Ranch, 1942.

18 MAPLECREST PROGRESS J1040

Birth Date: 3-10-2011 Bull +17152108 Tattoo: J1040

G A R Progress
G A R Objective 2345

B/R New Design 036
G A R Ext 4206
S S Objective T510 OT26
G A R 1407 New Design 2413
Bon View New Design 208
TC Erica Eileen 2047
G A R Retail Product
Maplecrest Rita A213

TC Total 410
Maplecrest Rita 7088
Maplecrest Rita A531

\$W
+25.32
\$F
+26.25
\$G
+51.20
\$B
+84.20

CED	BEPD	WEPD	YEPD	MILK	CW	MARB	RE	FAT
+10	+1.6	+41	+81	+29	+21	+1.12	+61	-0.05

BW	WW	YW
77	414	961

If your goal is producing high quality carcasses, check out this son of Progress. Progress currently ranks as the highest Marbling bull in the Angus breed. J1040 is also a son of 7088, one of the top-selling females from our 2012 sale.



BULL SALE: MARCH 11, 2013
ANNUAL FEMALE SALE: SEPT. 28, 2013



LOT 20



LOT 21

**FOR MORE INFORMATION ON THE
 SALE OFFERING OR
 MAPLECREST FARMS PROGRAM:**

(937) 763-6000 - John Grimes
 (937) 763-1198 - Joanie Grimes
 (606) 301-1961 - Ben Wheeler
 (937) 681-1550 - Scott Winkle
 Visit www.maplecrestfarms.com

19 MAPLECREST J8009BEXTOR J1046

Birth Date: 3-21-2011 Bull 17149895 Tattoo: J1046

C R A Bextor 872 5205 608	B A R Ext Traveler 205	\$W
GAR MC Bextor J8009	Cra Lady Jaye 608 498 S Easy	+29.03
Maplecrest Rita 5120	Rito 112 of 2536 Rito 616	\$F
	G A R New Design 1381	+50.28
	Bon View New Design 208	\$G
TC Total 410	TC Erica Eileen 2047	+40.17
Maplecrest Rita 9038	Whitestone Precision H141	\$B
Maplecrest RA Rita 5125	G A R Prime Time 2409	+87.89

CED	BE PD	WE PD	YE PD	MILK	CW	MARB	RE	FAT
+7	+1.0	+57	+107	+26	+34	+70	+91	+031

J1046 is a Bextor grandson out of an excellent Total daughter that possesses solid calving ease with excellent growth.

BW	WW	YW
77	618	1159

20 MAPLECREST NAVIGATOR 121Y

Birth Date: 3-4-2011 Bull 2678265 Tattoo: 121Y

TCF/RCC Temptation GJ640	TE McClintock G28	
SHS Navigator N2B	BOZ Sweet Temptation	
Rocky Hills JO	RHR Granite 140G	
	Rocky Hills E Jay	
	B/R New Design 036	API
Bon View New Design 1407	Bon View Pride 664	125.5
Maplecrest Rita A213	N Bar Emulation EXT	TI
G A R EXT 327	G A R 6807 Traveler 93	71.6

CED	BE PD	WE PD	YE PD	MILK	CW	MARB	RE	FAT
11.7	0.4	59.9	101.7	26.7	31.7	0.50	0.17	-0.05

121Y offers an excellent spread from his Birth EPD to his Yearling Weight EPD. This stout, well-balanced son of Navigator has the added bonus of being a son of the great A213 cow.

BW	WW	YW
83	337	848

21 MAPLECREST DOMINANCE 119Y

Birth Date: 2-28-2011 Bull 2678271 Tattoo: 119Y

STF Dominique R170	STF Montana Black	
STF Dominance T171	DLS Black Baldie L170	
MMP Kiss This 37L	STF Red Ransom	
	NUH MS Horizon 7H	
	B/R New Design 036	API
Bon View New Design 1407	Bon View Pride 664	133.9
Maplecrest Rita A213	N Bar Emulation EXT	TI
G A R EXT 327	G A R 6807 Traveler 93	66.3

CED	BE PD	WE PD	YE PD	MILK	CW	MARB	RE	FAT
12.0	0.9	52.7	83.9	25.4	21.7	0.50	+0.19	-0.05

This is another son of A213 out of the past National Western Grand Champion Simmental Bull Dominance.

BW	WW	YW
83	391	947

22 MAPLECREST TRADEMARK 123Y

Birth Date: 3-5-2011 Bull 2678263 Tattoo: 123Y

WLE Power Stroke	Burns Bull X339U	
GWS Ebony's Trademark 6N	Nichols Joliette C75	
NJC Ebony Antoinette	Black Irish Kansas	
	NJC Betsy Ross	
	MR Black GX 6W	API
Meyer Ranch 734	MISS GX 728R	71.5
CRCC Dixie Erica 6040S	D H D Traveler 6807	TI
O C C Dixie Erica 722J	O C C Dixie Erica 743A	52.2

CED	BE PD	WE PD	YE PD	MILK	CW	MARB	RE	FAT
2.5	2.1	54.2	75.0	16.5	17.6	-0.03	0.76	-0.07

Here is a 3/4 Simmental son of Trademark out of the past National Champion Sim-Angus Female 6040S.

BW	WW	YW
84	424	1036

23**MAPLECREST 5050 J1059**

Birth Date: 8-9-2011 Bull 17260046 Tattoo: J1059

B/R New Design 036
G A R New Design 5050
 G A R Precision 706

V D A R New Trend 315
 B/R Blackcap Empress 76
 G A R Precision 1680
 G A R Ext 2114

\$W
+24.19
\$F
+38.36
\$G
+45.37
\$B
+85.39

G A R Retail Product
Maplecrest Rita K9271
 Maplecrest Rita A213

G A R Precision 1680
 G A R Ext 4927
 Bon View New Design 1407 AAA
 G A R Ext 327

CED	BEPD	WEPD	YEPD	MILK	CW	MARB	RE	FAT
+12	+1.1	+43	+92	+34	+27	+81	+86	+012

This is one of the top calving ease prospects in the sale. J1059 is sired by the long-time Select Sires feature 5050 out of a nice Retail Product daughter.

BW	WW	YW
79	660	1086

**Lot 23****FALL YEARLING BULLS****24****MAPLECREST PROGRESS J1238**

Birth Date: 9-1-2011 Bull +17282184 Tattoo: J1238

G A R Predestined
G A R Progress
 G A R Objective 2345

B/R New Design 036
 G A R Ext 4206
 S S Objective T510 OT26
 G A R 1407 New Design 2413

\$W
+26.96
\$F
+19.19
\$G
+46.80
\$B
+87.45

Bon View New Design 1407
Maplecrest Rita A213
 G A R Ext 327

B/R New Design 036
 Bon View Pride 664
 N Bar Emulation EXT
 G A R 6807 Traveler 93

CED	BEPD	WEPD	YEPD	MILK	CW	MARB	RE	FAT
+14	+4	+39	+74	+35	+28	+1.08	+56	+015

Another elite calving ease bull sired by the marbling leader Progress. J1238 deserves an extra look as he has the extra marbling you would expect from his sire and is a direct son of A213.

BW	WW	YW
73	526	972

26**MAPLECREST 454 J1235**

Birth Date: 8-28-2011 Bull +17260367 Tattoo: J1235

Boyd New Day 8005
B/R New Day 454
 B/R Ruby 1224

A A R New Trend
 S V F Forever Lady 57D
 B/R New Design 323
 H F Ruby 036-951

\$W
+33.18
\$F
+32.89
\$G
+41.09
\$B
+85.04

G A R Predestined
Maplecrest Forever Lady A622
 Maplecrest Forever Lady S301

B/R New Design 036
 G A R Ext 4206
 Twin Valley Precision E161
 Baldrige Forever Lady 800J

CED	BEPD	WEPD	YEPD	MILK	CW	MARB	RE	FAT
+4	+2.3	+47	+89	+32	+31	+81	+83	+043

This son of 454 out of the A622 donor possesses the extra body and mass of his powerful dam.

BW	WW	YW
83	537	849

25**MAPLECREST 454 J1063**

Birth Date: 8-12-2011 Bull +17260359 Tattoo: J1063

Boyd New Day 8005
B/R New Day 454
 B/R Ruby 1224

A A R New Trend
 S V F Forever Lady 57D
 B/R New Design 323
 H F Ruby 036-951

\$W
+30.28
\$F
+37.76
\$G
+44.36
\$B
+79.04

TC Total 410
Maplecrest Rita 7088
 Maplecrest Rita A531

Bon View New Design 208
 TC Erica Eileen 2047
 G A R Retail Product
 Maplecrest Rita A213

CED	BEPD	WEPD	YEPD	MILK	CW	MARB	RE	FAT
+4	+2.0	+52	+95	+30	+22	+63	+96	-008

We love the New Day 454 x Total cross and here is another example why. J1063 is a good herd sire prospect with a balanced set of EPDs.

BW	WW	YW
83	725	989

27**MAPLECREST REGIS J1100**

Birth Date: 9-13-2011 Bull +17281788 Tattoo: J1100

S A V Final Answer 0035
Coleman Regis 904
 Coleman Donna 714

Sitz Traveler 8180
 S A V Emulous 8145
 Connealy Onward
 Coleman Donna 386

27 **28**
\$W **\$W**
+28.75 **+28.58**
\$F **\$F**
+31.05 **+24.72**
\$G **\$G**
+23.43 **+29.33**
\$B **\$B**
+68.43 **+70.26**

B C Marathon 7022
Maplecrest Rita K8271
 G A R Lucys Boy G158

O C C Kirby 633K
 Gibbet Hill Mignonne E37
 V D A R Lucys Boy
 G A R Sleep Easy 1304

	CED	BEPD	WEPD	YEPD	MILK	CW	MARB	RE	FAT
27	+7	+2.9	+51	+89	+29	+32	+27	+54	+010
28	+7	+2.5	+47	+82	+29	+28	+40	+51	+006

This pair of Regis sons is out of the 2009 Ohio State Fair Grand Champion Female. These bulls possess the style and balance that you would expect from this mating.

	BW	WW	YW
27	92	669	995
28	86	597	891

29 MAPLECREST REGIS J1061

Birth Date: 8-10-2011 Bull 17337186 Tattoo: J1061

Coleman Regis 904 Coleman Donna 714	S A V Final Answer 0035	Sitz Traveler 8180	\$W
		S A V Emulous 8145	+33.01
		Connealy Onward	\$F
RAF Rita 268 Maplecrest Rita A213	G A R Retail Product	G A R Precision 1680	+21.07
		G A R Ext 4927	\$G
		Bon View New Design 1407	+35.23
		G A R Ext 327	\$B
			+70.63

CED	BEPD	WEPD	YEPD	MILK	CW	MARB	RE	FAT
+13	-5	+45	+78	+32	+23	+51	+59	+006

J1061 is a complete, moderate framed son of Regis that descends from the noted A213 cow.

BW	WW	YW
76	680	938

30 MAPLECREST REGIS J1062

Birth Date: 8-11-2011 Bull 17260047 Tattoo: J1062

Coleman Regis 904 Coleman Donna 714	S A V Final Answer 0035	Sitz Traveler 8180	\$W
		S A V Emulous 8145	+31.87
		Connealy Onward	\$F
Maplecrest Fink Donna 9356 Fink Donna 5636 1344 24J	TC Total 410	Bon View New Design 208	+33.96
		TC Erica Eileen 2047	\$G
		BT Right Time 24J	+32.74
		Finks Donna 1344 739 036	\$B
			+71.44

CED	BEPD	WEPD	YEPD	MILK	CW	MARB	RE	FAT
+8	+2.1	+55	+93	+30	+26	+44	+65	+008

There is lots of quality here in this uniquely bred son of Regis. Note that he is linebred to the famed Donna cow family.

BW	WW	YW
88	709	1034

31 MAPLECREST IRONSTONE J1207

Birth Date: 8-4-2011 Bull +17262000 Tattoo: J1207

R/M Ironstone 4047 B/R Ruby of Tiffany 5144	C A Future Direction 5321	G A R Precision 1680	\$W
		C A Miss Power Fix 308	+25.19
		B/R New Design 323	\$F
Maplecrest Rita A213 G A R Ext 327	B/R Ruby of Tiffany 5144	B/R Ruby of Tiffany 346	+21.94
			\$G
		B/R New Design 036	+41.87
		Bon View Pride 664	\$B
			+74.96

CED	BEPD	WEPD	YEPD	MILK	CW	MARB	RE	FAT
+3	+2.8	+43	+78	+27	+21	+73	+54	+001

If you are looking for a powerful herd bull, here he is. J1207 has all extra body and balance that A213 delivers time after time.

BW	WW	YW
79	855	1111

32 MAPLECREST IRONSTONE J1218

Birth Date: 9-12-2011 Bull +17282694 Tattoo: J1218

R/M Ironstone 4047 B/R Ruby of Tiffany 5144	C A Future Direction 5321	G A R Precision 1680	\$W
		C A Miss Power Fix 308	+27.60
		B/R New Design 323	\$F
Maplecrest Rita 7088 Maplecrest Rita A531	B/R Ruby of Tiffany 5144	B/R Ruby of Tiffany 346	+37.29
			\$G
		Bon View New Design 208	+43.81
		TC Erica Eileen 2047	\$B
			+67.51

CED	BEPD	WEPD	YEPD	MILK	CW	MARB	RE	FAT
-1	+3.8	+53	+95	+22	+13	+68	+55	-018

J1218 is a direct son of the highly-valued 7088 cow.

BW	WW	YW
80	547	875

33 MAPLECREST PREDESTINED J1234

Birth Date: 8-28-2011 Bull +17260312 Tattoo: J1234

G A R Predestined G A R Ext 4206	B/R New Design 036	V D A R New Trend 315	\$W
		B/R Blackcap Empress 76	+23.84
		N Bar Emulation EXT	\$F
Baldridge Forever Lady 800J S V F Forever Lady 177C	G A R Ext 4206	G A R 6807 Traveler 1432	+21.00
			\$G
		Traveler 1148 G D A R	+35.59
		V D A R Pine Drive Lucy 5	\$B
			+74.16

CED	BEPD	WEPD	YEPD	MILK	CW	MARB	RE	FAT
+3	+3.7	+40	+76	+23	+26	+93	+18	+043

Predictable genetics here with this excellent son of the famed Predestined from the proven 800J cow.

BW	WW	YW
85	574	978

34 MAPLECREST EXPECTATION J1242

Birth Date: 9-1-2011 Bull +17282046 Tattoo: J1242

G A R Expectation 4915 G A R Traveler 2421	N Bar Emulation EXT	Emulation N Bar 5522	\$W
		N Bar Primrose 2424	+23.64
		Q A S Traveler 23-4	\$F
G A R Lucys Boy G158 G A R Sleep Easy 1304	G A R Traveler 2421	G A R Scotch Cap 209	+19.44
			\$G
		Traveler 1148 G D A R	+28.18
		V D A R Pine Drive Lucy 5	\$B
			+76.04

CED	BEPD	WEPD	YEPD	MILK	CW	MARB	RE	FAT
+9	+2.4	+41	+75	+28	+35	+51	+27	+012

This extremely long bodied son of Expectation boasts a balanced set of EPDs. The dam of this bull, G158, produced numerous champions in her career.

BW	WW	YW
85	607	1069

35 MAPLECREST SULLIVAN J1253

Birth Date: 8-20-2011 Bull +17271966 Tattoo: J1253

Connealy Sullivan 83A Breesha of Conanga 1251	Connealy Tobin	Bon View New Design 208	\$W
		Delia of Conanga 667	+36.75
		Connealy Deep Canyon 454	\$F
Maplecrest RA Rita 5125 G A R Prime Time 2409	Breesha of Conanga 1251	Breeta of Conanga 525	+39.45
			\$G
		G A R Precision 1680	+37.11
		Rita 3X11 of Rita OFB4 Ext	\$B
			+81.99

CED	BEPD	WEPD	YEPD	MILK	CW	MARB	RE	FAT
+7	+7	+51	+96	+27	+32	+70	+64	+032

Those in search of a calving ease sire should consider this Sullivan son out of an excellent Total daughter.

BW	WW	YW
80	444	820

36 MC SCC CURRENCY J1111

Birth Date: 9-3-2011 Bull 17282737 Tattoo: J1111

OSU Currency 8173 O S U Empress 4123	Stevenson MoneyMaker R185	Boyd On Target 1083	\$W
		Stevenson Clova Pride L888	+18.19
		Northern Improvement 4480 GF	\$F
SCC Nellie Girl 980 SCC Echo Dell Nellie 6005	O S U Empress 4123	O S U 2928 Empress 4177	+46.69
		Champion Hill Edition 2029	\$G
		Dameron PVF Proven Queen010	+5.69
		P V F New Horizon 001	\$B
			+54.60

CED	BEPD	WEPD	YEPD	MILK	CW	MARB	RE	FAT
-2	+5.1	+54	+103	+28	+36	-07	+29	-016

This is the first calf produced by Lindsey's powerful 980 female that was Grand Champion Female at the 2010 Ohio State Fair and also garnered championships at Louisville and Denver. She has transmitted her growth and power to this excellent son of Currency. Owned with Stertzbach Cattle Co., OH.

BW	WW	YW
95	769	1148

37 MAPLECREST CURRENCY J1094

Birth Date: 9-7-2011 Bull +17282739 Tattoo: J1094

OSU Currency 8173	Boyd On Target 1083	\$W
OSU Empress 4123	Stevenson Clova Pride L888	+23.22
	Northern Improvement 4480 GF	\$F
	O S U 2928 Empress 4177	+45.64
	Sitz Traveler 8180	\$G
SCC Queen Beyonce 824	Boyd Forever Lady 8003	+16.50
SCC Queen Beyonce 3053	P V F New Horizon 001	\$B
	Dameron PVF Proven Queen010	+66.94

CED	BEPD	WEPD	YEPD	MILK	CW	MARB	RE	FAT
+6	+2.4	+51	+101	+26	+38	+23	+12	-005

The dam of this Currency son, 824, is building an excellent production record. A full sister to this bull won her class at the National Junior Angus Show, a maternal sister was Grand Champion Female at the Ohio Angus Preview Show, and yet another maternal sister was a \$14,000 feature at the 2012 Hartman Cattle Company sale.

38 MAPLECREST SAUGAHATCHEE 1197J

Birth Date: 8-17-2011 Bull +17282651 Tattoo: 1197J

Leachman Saugahatchee 3000C	Emulation N Bar 5522	\$W
Leachman B C 7100	N Bar Primrose 2424	+21.29
	Rito 2100 G D A R	\$F
	Canyon Colossal Queen 0727	+28.64
	Sitz Traveler 8180	\$G
SCC Queen Beyonce 824	Boyd Forever Lady 8003	-32
SCC Queen Beyonce 3053	P V F New Horizon 001	\$B
	Dameron PVF Proven Queen010	+45.17

CED	BEPD	WEPD	YEPD	MILK	CW	MARB	RE	FAT
+4	+3.8	+46	+85	+22	+33	-14	+43	+025

This son of Saugahatchee out of the 824 cow has a bit more frame and extension.

39 MAPLECREST OBJECTIVITY J1115

Birth Date: 10-12-2011 Bull 17281790 Tattoo: J1115

Maplecrest Objectivity	S S Traveler 6807 T510	\$W
Maplecrest Rita 7088	S S Miss Rita R011 7R8	+15.35
	TC Total 410	\$F
	Maplecrest Rita A531	+43.35
	Bon View New Design 208	\$G
Maplecrest Blackcap K9289	TC Erica Eileen 2047	+40.32
Maplecrest Blackcap 489	Leachman Right Time	\$B
	G A R Plowman G270	+81.78

CED	BEPD	WEPD	YEPD	MILK	CW	MARB	RE	FAT
+1	+4.8	+48	+98	+26	+28	+61	+66	-015

The dam of this bull is a Total daughter that was produced from the top selling cow in our 2009 production sale. A maternal brother to the dam of this bull was Grand Champion Bull at the 2010 Ohio State Fair and now serves as a featured sire at Gamble Angus in Tennessee.

40 MAPLECREST OBJECTIVITY J1102

Birth Date: 9-15-2011 Bull 17281789 Tattoo: J1102

Maplecrest Objectivity	S S Traveler 6807 T510	\$W
Maplecrest Rita 7088	S S Miss Rita R011 7R8	+17.88
	TC Total 410	\$F
	Maplecrest Rita A531	+21.80
	G A R Precision 1680	\$G
Maplecrest Rita K9267	G A R Ext 4927	+43.35
Maplecrest Rita A213	Bon View New Design 1407	\$B
	G A R Ext 327	+66.28

CED	BEPD	WEPD	YEPD	MILK	CW	MARB	RE	FAT
+10	+2.5	+33	+74	+28	+13	+70	+45	-019

This grandson of Objectivity is linebred to the A213 cow.

41 MAPLECREST GMASTER 134Y

Birth Date: 8-27-2011 Bull 2678267 Tattoo: 134Y

42 MAPLECREST GMASTER 145Y

Birth Date: 9-6-2011 Bull 2678269 Tattoo: 145Y

43 MAPLECREST GMASTER 141Y

Birth Date: 9-7-2011 Bull 2678272 Tattoo: 141Y

SS Ebony's Grandmaster	HARTS Black Casino B408	41	42	43
SOSF Ebony's Joy L-123	PVF-BF BF26 Black Joker	API	API	API
	PVF-BF Mabelle C131	75.0	72.0	85.0
	HC Power Drive 88H	TI	TI	TI
	NJC/TJF Joy	50.0	46.0	54.0
	MR Black GX 6W			
Meyer Ranch 734	MISS GX 728R			
CRCC Dixie Erica 6040S	D H D Traveler 6807			
O C C Dixie Erica 722J	OCC Dixie Erica 743A			

	CED	BEPD	WEPD	YEPD	MILK	CW	MARB	RE	FAT
41	3.0	1.5	47.1	71.6	28.1	6.5	-0.01	0.92	-0.02
42	2.7	1.4	46.5	61.7	22.2	0.0	-0.14	0.58	-0.06
43	3.0	1.5	47.1	71.6	28.1	6.5	0.17	0.99	-0.01

Here is a trio of 3/4 Simmental - 1/4 Angus bulls sired by the popular Grandmaster out of past National Champion Sim-Angus Female 6040S. We have several full sisters to these bulls that will play an important role in the development of our Sim-Angus program. One of these full sisters was named Grand Champion Percentage Simmental Female at the 2012 Ohio State Fair Jr. Show and Grand Champion Bred & Owned Percentage Female at the 2012 Simmental Sweepstakes. These bulls will work well on British breed commercial cows.

44 MAPLECREST DOMINANCE 153Y

Birth Date: 9-19-2011 Bull 2678258 Tattoo: 153Y

45 MAPLECREST DOMINANCE 154Y

Birth Date: 9-21-2011 Bull 2678259 Tattoo: 154Y

46 MAPLECREST DOMINANCE 149Y

Birth Date: 9-13-2011 Bull 2678257 Tattoo: 149Y

47 MAPLECREST DOMINANCE 147Y

Birth Date: 9-12-2011 Bull 2678256 Tattoo: 147Y

STF Dominance T171	STF Montana Black	44	45	46	47
MMP Kiss This 37L	DLS Black Baldie L170	API	API	API	API
	STF Red Ransom	115	116	121	110
	NUH MS Horizon 7H	TI	TI	TI	TI
	G A R Precision 1680	58.0	59.0	61.0	56.0
	G A R Retail Product				
Maplecrest Rita M546	G A R EXT 4927				
G A R Lucys Boy G158	V D A R Lucys Boy				
	G A R Sleep Easy 130				

	CED	BEPD	WEPD	YEPD	MILK	CW	MARB	RE	FAT
44	10.1	1.7	51.8	82.3	24.1	13.2	0.29	0.44	-0.05
45	10.1	1.7	51.8	82.3	24.1	13.2	0.32	0.21	-0.06
46	10.1	1.7	51.8	82.3	24.1	13.2	0.41	0.31	-0.06
47	10.1	1.7	51.8	82.3	24.1	13.2	0.20	0.37	-0.06

This set of 1/2 Simmental - 1/2 Angus bulls are sired by the past National Western Grand Champion Simmental Bull Dominance out of one of the truly special cows in our program, M546. Many daughters of M546 will be roaming our pastures for years to come because of her productivity and superior performance. A daughter of M546 was the top selling female in our 2012 production sale bringing \$18,000 for 1/2 interest. These bulls offer great mating flexibility for the progressive commercial cattleman.

FALL YEARLING BULLS



LOT 48

48 MAPLECREST ENCORE 158Y
 Birth Date: 9-3-2011 Bull 2678261 Tattoo: 158Y

CNS Dream On L186
WSJ Encore 2284476 PP
 TC Bandeva 0118

Nichols Legacy G151
 CNS Sheeza Dream K107W
 Woodhill Supreme
 TC Bandeva 5028

Meyer Ranch 734
CRCC Dixie Erica 6040S
 O C C Dixie Erica 722J

MR Black GX 6W
 MISS GX 728R
 D H D Traveler 6807
 O C C Dixie Erica 743A

API
81.0
TI
56.0

CED	BE PD	WE PD	YE PD	MILK	CW	MARB	RE	FAT
3.4	2.0	53.2	77.1	11.5	10.2	0.18	0.71	-0.04

This is a moderate framed 1/2 Simmental – 1/2 Angus son of the Genex sire Encore out of the 6040S cow.

BW	WW	YW
86	550	910

49 MAPLECREST MANDATE 116Y
 Birth Date: 8-19-2011 Bull 2679407 Tattoo: 116Y

S S Objective T510 0T26
SYDGEN Mandate 6079
 SYDGEN Gina 4235

WSJ Encore
Maplecrest Darling 903W
 CRCC Irish Darling 5253R

S S Traveler 6807 T510
 S S MISS RITA R011 7R8
 S A F Focus J30
 Innway Ms NewDesign 201
 CNS Dream On L186
 TC Bandeva 0118

API
101.0
TI
64.0

CED	BE PD	WE PD	YE PD	MILK	CW	MARB	RE	FAT
11.2	-0.6	50.4	86.1	22.5	12.4	0.66	0.61	-0.04

BW	WW	YW
85	515	875

This low percentage Simmental (12.5 %) is sired by the ABS Angus sire Mandate out of a Simmental – Maine-Anjou – Angus cow.

50 MAPLECREST EXPLORER 142Y
 Birth Date: 9-4-2011 Bull 2678266 Tattoo: 142Y

51 MAPLECREST EXPLORER 130Y
 Birth Date: 8-24-2011 Bull 2678270 Tattoo: 130Y

52 MAPLECREST EXPLORER 157Y
 Birth Date: 8-30-2011 Bull 2678260 Tattoo: 157Y

Westfall Voyager 721P
BMR Explorer
 WW Miss My Dream 429R

SVJ Power Surge
 Drake Summer Sister
 CNS Dream On L186
 WW Miss Tommie 490N

Meyer Ranch 734
CRCC Dixie Erica 6040S
 O C C Dixie Erica 722J

MR Black GX 6W
 MISS GX 728R
 D H D Traveler 6807
 O C C Dixie Erica 743A

50	51	52
API	API	API
81.0	86.0	83.0
TI	TI	TI
50.0	53.0	51.0

	CED	BE PD	WE PD	YE PD	MILK	CW	MARB	RE	FAT
50	2.7	1.4	46.5	61.7	22.2	0.0	0.03	0.52	-0.07
51	2.7	1.4	46.5	61.7	22.2	0.0	0.13	0.51	-0.06
52	2.7	1.4	46.5	61.7	22.2	0.0	0.07	0.50	-0.07

This trio of 3/4 Simmental – 1/4 Angus bulls are sired by Explorer out of the past National Champion Sim-Angus Female 6040S.

	BW	WW	YW
50	75	580	914
51	79	599	806
52	84	540	748

UP TO DATE SCAN AND WEIGHT DATA WILL BE AVAILABLE ON SALE DAY FOR THE SPRING YEARLINGS.



LOT 53

53 MAPLECREST FURTH PROG J2005
 Birth Date: 12-26-2011 Bull 17376356 Tattoo: J2005

G A R Predestined
G A R Further Progress
 G A R Objective 2345

B/R New Design 036
 G A R Ext 4206
 S S Objective T510 0T26
 G A R 1407 New Design 2413

TC Total 410
Maplecrest Fink Donna 9358
 Fink Donna 5636 1344 24J

Bon View New Design 208
 TC Erica Eileen 2047
 BT Right Time 24J
 Finks Donna 1344 739 036

\$W
+32.16
\$F
+38.51
\$G
+46.59
\$B
+88.68

CED	BE PD	WE PD	YE PD	MILK	CW	MARB	RE	FAT
+14	-.1	+53	+96	+33	+29	+9.6	+6.6	+0.06

J2005 is sired by Further Progress, a full brother to the popular Progress. Produced from an excellent young Total daughter, this bull is an excellent combination of calving ease, growth, and carcass merit.

BW	WW	YW
72	693	

54 MAPLECREST TOTAL J2012

Birth Date: 1-4-2012 Bull 17376386 Tattoo: J2012

TC Total 410	Bon View New Design 208	B/R New Design 036	\$W
	TC Erica Eileen 2047	Bon View Erica 443	+29.91
Maplecrest Rita 9002		Twin Valley Precision E161	\$F
		TC Erica Eileen 5116	+42.74
		C A Future Direction 5321	\$G
		Maplecrest Rita A213	+41.51
	GAR MC Full Circle	G A R Expectation 4915	\$B
	Maplecrest Rita 472	G A R Lucys Boy G158	+88.67

CED	BEPD	WEPD	YEPD	MILK	CW	MARB	RE	FAT
+3	+2.2	+57	+101	+31	+34	-.79	+.72	+.018

This powerful Total son descends from the productive G158 cow. Check out his excellent growth and carcass numbers.

BW	WW	YW
82	700	



Lot 54

55 MAPLECREST TOTAL J2077

Birth Date: 2-17-2012 Bull +17376363 Tattoo: J2077

TC Total 410	Bon View New Design 208	B/R New Design 036	\$W
	TC Erica Eileen 2047	Bon View Erica 443	+27.93
Maplecrest Blackcap L7115		Twin Valley Precision E161	\$F
		TC Erica Eileen 5116	+48.31
		G A R Precision 1680	\$G
		C A Miss Power Fix 308	+42.60
	C A Future Direction 5321	Plowman 1627 of Millbrae SAR	\$B
	G A R Plowman G270	G A R Precision 2536	+88.18

CED	BEPD	WEPD	YEPD	MILK	CW	MARB	RE	FAT
-2	+3.8	+61	+107	+26	+32	+.65	+.88	-.008

This is one of the top growth bulls in this entire offering. Just like his sire Total, he will deliver extra pounds and exceptional carcass quality.

BW	WW	YW
71	568	

56 MAPLECREST OBJECTIVE J2083

Birth Date: 1-17-2012 Bull +17376365 Tattoo: J2083

S S Objective T510 0T26	S S Traveler 6807 T510	D H D Traveler 6807	\$W
	S S Miss Rita R011 7R8	S S Miss Hi Spade A114	+33.90
Maplecrest Forever Lady A622		S S Rito Rito R76 R011	\$F
		S S Miss Ultress U56	+41.71
		B/R New Design 036	\$G
		G A R Predestined	+42.24
	Maplecrest Forever Lady S301	Twin Valley Precision E161	\$B
		Baldrige Forever Lady 800J	+76.07

CED	BEPD	WEPD	YEPD	MILK	CW	MARB	RE	FAT
+8	+2.0	+54	+99	+30	+21	+.89	+.52	+.031

This son of Objective offers calving ease and solid growth in an attractive package.

BW	WW	YW
75	629	

57 MC SCC CURRENCY J2049

Birth Date: 3-3-2012 Bull 17221625 Tattoo: J2049

OSU Currency 8173	Stevenson Moneymaker R185	Boyd On Target 1083	\$W
	OSU Empress 4123	Stevenson Clova Pride L888	+24.10
SCC Georgina GAF 012		Northern Improvement 4480 GF	\$F
		O S U 2928 Empress 4177	+44.67
		S A V Limited Edition 9283	\$G
		Champion Hill Lady 1530	+7.44
	Champion Hill Edition 2029	Leachman Saugahatchee 3000C	\$B
	SCC Mannings Georgina 610	L L A Georgina 419	+51.09

CED	BEPD	WEPD	YEPD	MILK	CW	MARB	RE	FAT
-2	+4.4	+53	+101	+28	+30	+.02	+.11	+.0

This may be the youngest bull in the offering but don't overlook this intriguing prospect. Sired by Currency out of the many-time champion 012, this stout bull offers lots of muscle expression with lots of eye appeal. Owned with Stertzbach Cattle Co., OH.

BW	WW	YW
92	743	



Lot 57

58 MAPLECREST NDEWTIME 203Z

Birth Date: 1-8-2012 Bull 2678280 Tattoo: 203Z

HTP SVF In Dew Time	CNS Dream On L186	Nichols Legacy G151	
	HTP SVF Honeydew	CNS Sheeza Dream K107W	
K0162 (Commercial Angus First-Calf Heifer)		GW Lucky Dice 187H	
		HC Honeysuckle Rose	

API
NA
TI
NA

CED	BEPD	WEPD	YEPD	MILK	CW	MARB	RE	FAT
12.0	2.1	58.3	63.6	16.6	1.1	0.53	1.38	0.01

We conclude this offering with a solid 1/2 Simmental son of the noted In Dew Time out of a solid commercial Angus first-calf-heifer.

BW	WW	YW
90	638	



Lot 58

SPRING YEARLING BULLS



MAPLECREST EVA 7010 • DAM OF LOT 1



MAPLECREST RITA M546 • DAM OF LOTS 44-47



MAPLECREST RITA A213 • DAM OF LOTS 10, 20, 21, 24, 31



CRCC DIXIE ERICA 6040S • DAM OF LOTS 12, 22, 41-43, 48, 50-52



MAPLECREST RITA 7088 • DAM OF LOTS 7, 18, 25, 32



MAPLECREST BLACKCAP L7115 • DAM OF LOTS 4, 55



MAPLECREST FOREVER LADY A622 • DAM OF LOTS 6, 26, 56



G A R OBJECTIVE 1485 • DAM OF LOT 2

R**TC TOTAL 410**

Birth Date: 1-16-2004 Bull +14844711 Tattoo: 410

B/R New Design 036
Bon View New Design 208
Bon View Erica 443V D A R New Trend 315
B/R Blackcap Empress 76
N Bar Emulation EXT
Bon View Erica 1380Twin Valley Precision E161
TC Erica Eileen 2047
TC Erica Eileen 5116G A R Precision 1680
W C C Blackcap C9
Leachman Right Time
T C Erica Eileen 6006

\$W
+27.92
\$F
+67.33
\$G
+45.80
\$B
+100.85

CED	BEPD	WEPD	YEPD	MILK	CW	MARB	RE	FAT
-4	+3.6	+70	+125	+26	+41	+81	+91	-.011

Total has established himself as one of the breed's all-time performance leaders. Total has been the long standing Maplecrest senior herd sire featured member of the Select Sires A.I. stud lineup. He continues to rank among the breed's elite in terms of growth, carcass traits, and \$Indexes. Total brings much more to the table than statistics. The docility of his progeny is well documented and the udder quality of his daughters is excellent. He is truly the "Total" package.

**R****CONNELY CONFIDENCE 0100**

Birth Date: 1-16-2010 Bull 16761479 Tattoo: 0100

Bon View New Design 208
Connely Tobin
Delia of Conanga 667B/R New Design 036
Bon View Erica 443
C A Future Direction 5321
Deena of Conanga 668Connealy Thunder
Becka Gala of Conanga 8281
Becka Lee of Conanga 37Baldrige Kaboom
Parka of Conanga 241
C R A Bextor 872 5205 608
Beckys Lia of Conanga 81

\$W
+32.08
\$F
+47.30
\$G
+48.21
\$B
+88.16

CED	BEPD	WEPD	YEPD	MILK	CW	MARB	RE	FAT
+17	-2.6	+45	+100	+32	+26	+79	+1.15	+0.11

The early reports of Confidence calves from across the country are exciting. We believe you will look long and hard to find the genetic merit and phenotypic excellence that this great young sire brings to the table. Confidence represents everything we are looking for in a herd sire: calving ease, solid growth, carcass and \$Index superiority wrapped up in a structurally sound, eye appealing package. As our partners at Select Sires say, "You got to have Confidence!"

**R****HTP/SVF SPEEDWAY X621**

Birth Date: 9-11-2010 Bull 2590621 Tattoo: X621

Triple C Invasion R47K
LMF Movin Forward
LMF Godivas BeautystrokeSRS J914 Preferred Beef
Hooks Karrie 47K
WLE Power Stroke
SCF Godiva 215KCNS Dream On L186
HTP/SVF Honeydew T18
HTP SVF HoneydewNichols Legacy G151
CNS Sheeza Dream K107W
GW Lucky Dice 187H
HC Honeysuckle Rose

API
119.6
TI
64.6

CED	BEPD	WEPD	YEPD	MILK	CW	MARB	RE	FAT
9.4	1.9	60.9	96.6	20.5	30.3	0.13	0.92	-.03

Speedway was our selection from the 2012 Sunset View Spring Bull Sale to assist us in our effort to produce quality Simmental-Angus genetics. This son of the ABS Global sire LMF Movin Forward was produced by a full sister to the noted In Dew Time. Speedway is an excellent combination of structural soundness, depth of rib and power, all in a moderate framed package.



REFERENCE SIRE



2594 St. Rt. 73 • Hillsboro, OH 45133

*Selling 58
serviceable-aged
Angus and
Simmental-Angus
bulls*

**Maplecrest Farms
Inaugural Bull Sale
Monday, March 11, 2013
Union Stock Yards
Hillsboro, Ohio • 7 p.m.**



Lot 8



Lot 3